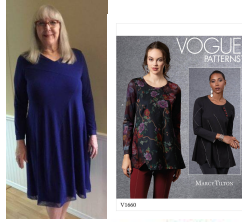


SUPPLY LIST FOR CLASS, DEMO, OR CLUB



Working With Assymetrical Patterns

Cathy Martino

Brief Description of Class: Learn some tips for working with layouts that have different right and left pieces to them. How to cut, how to label, and how to sew them will be covered. Choose Vogue 1634 by Sandra Betzina or Vogue 1660 by Marcy Tilton to work on. Tips for sewing with knits, topstitching them, seam finishes and more will be dealt with in class.

SUPPLY LIST	
Pattern: Vogue 1634 all sizes included or 1660 which has 2 different size ranges	Our Part #:
Pattern tracing paper if you want to preserve the original pattern	
Fabrics according to pattern for your size, we will cover this in the prep class too	
Sharp pins, ripper, scissors, fabric marker that will show on your fabric	
Optional: topstitching or edge joining foot for even topstitching. OESD wash away sticky stabilizer on the roll to stabilize topstitching. Roller or walking foot can be good too.	
Serger is optional as well	
Stretch 75/11 machine needle	
Hand sewing needle	

Sewing Machine: Please Bring machine to class in good working order, bring full accessories & manual for machine.

Basic Sewing Kit: Rotary cutter, ruler & mat, Scissors, seam ripper, press sheet, pins, thread, thread snips, fabric marker of choice.

If you have any questions please contact me: cathym@snipandstitch.com
See you at Class!