

SUPPLY LIST FOR CLASS, DEMO, OR CLUB



ALL ABOUT TILING SCENES SPRING/SUMMER 2022 Donna Morton

**THIS SUPPLY LIST IS TWO PAGES LONG
AND CONTAINS INFORMATION ABOUT THE PREP CLASS.
PLEASE READ ALL THE WAY TO THE END.**

www.embroideryonline.com has some wonderful Tiling Scenes that make beautiful and attractive wall hangings to celebrate a season or coordinate with your home decor. In this hands on class learn about the supplies needed, the preparation of fabrics and how to finish your chosen tiling scene. These are easier than you might think! Suitable for all makes of domestic embroidery machines (Janome, Husqvarna, Bernina, Pfaff etc.) capable of receiving designs from a computer. Minimum hoop size required is dependent on the tiling scene you would like to use.

SUPPLIES	Our Part #
<p>Any brand Combo Sewing/Embroidery Machine capable of stitching a minimum 130 X 180 mm design or larger and usual embroidery supplies:</p> <ul style="list-style-type: none">• USB stick. Please make sure your USB stick works in your machine! With rapidly changing technology it is impossible for me to predict what size or Brand of USB stick will work in various machines. If your machine did come with a USB stick, bring that one.• Hoops – the hoop you need will depend on the tiling scene you select	
<p>Tiling Scene from www.embroideryonline.com</p> <p>Please print your receipt as proof of purchase.</p> <p>Watch for sales up to the date of the prep class. If your chosen design does not come on sale I will have a 20% off coupon for you on the first class date.</p>	

SUPPLY LIST FOR CLASS, DEMO, OR CLUB

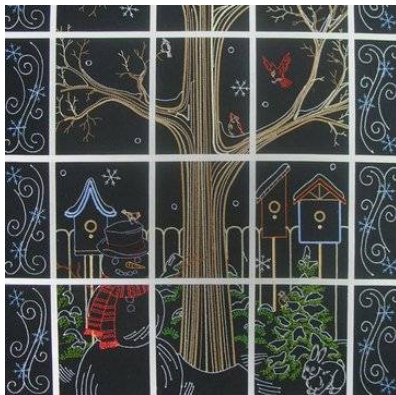
OESD Tiling Scene Thread Kit. I highly recommend you order one through the store. It will save you hours of time trying to match the threads suggested.	
Fabric and machine embroidery threads (if you are not ordering a kit) as detailed in the documentation that comes with your selected tiling scene (see pdf in your download). Some tiling scenes use ribbon to create a window effect. I'm sorry but we do not stock ribbon.	
Decobob or pre-wounds	
Inspira Cut Away <ul style="list-style-type: none"> Your instructions may recommend certain OESD stabilizers but I prefer to use Inspira Cut Away 	
505 Temporary Spray	
Construction thread for piecing	
Janome Blue and Red tip needles.	
Walking Foot or Accufeed Flex feet (1/4 inch and STD)	
Basic Sewing Kit: Rotary cutter, ruler & mat, Scissors, seam ripper, press sheet, pins, thread, thread snips, wash away fabric marker that will show up on your fabric.	

PREP CLASS

DO NOT bring your machine to the Prep Class.

We will review the various tiling scenes available and I will be helping your plan the supplies you will need for the tiling scene you have chosen. Bring note taking materials and a printed copy of the pdf file that comes with your purchase if you have already purchased your designs.

If you have any questions you can e-mail me at donnamo@snipandstitch.com See you in class!



SUPPLY LIST FOR CLASS, DEMO, OR CLUB

